

PRELIMINARY LAYOUT: SUBJECT TO CHANGE

PARKING CALCULATIONS:

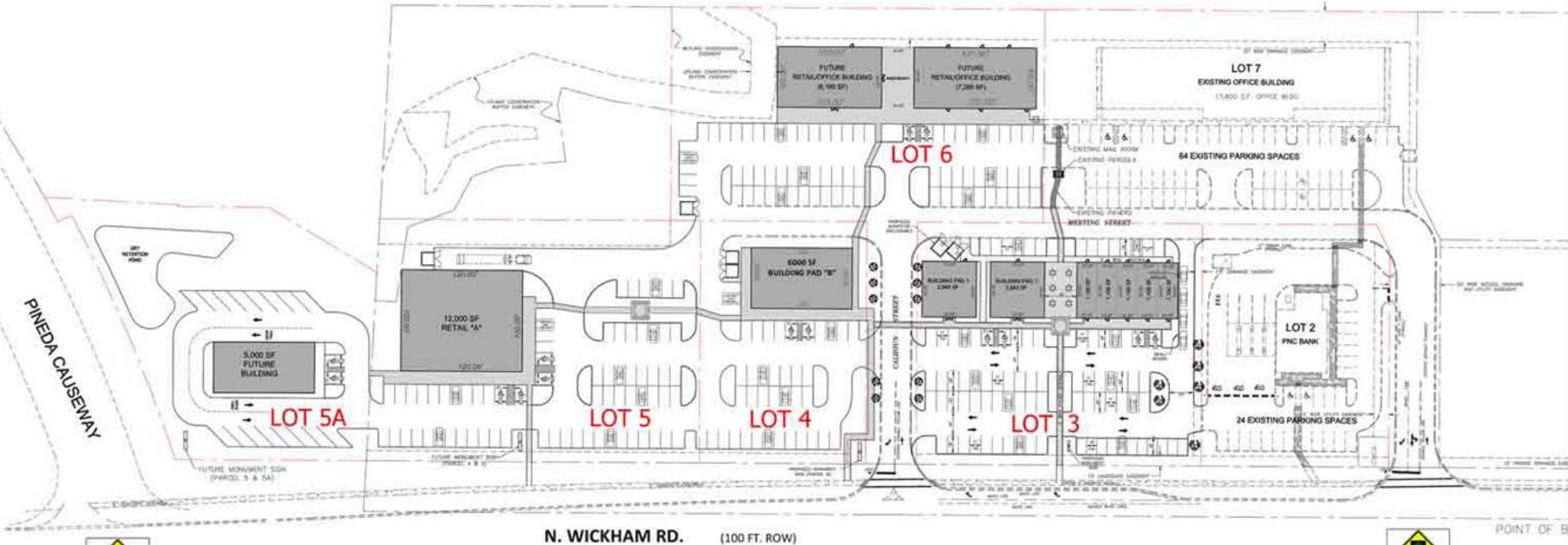
**LOT 3**  
 11,386 SF BUILDING GROSS  
 10,247 SF (ASSUMED STORAGE REDUCTION)  
 PARKING SPACES PROVIDED = 88 SPACES  
 RATIO = 1 PARKING SPACE PER 116 SF

**LOT 4**  
 6,000 SF BUILDING GROSS  
 5,400 SF (ASSUMED STORAGE REDUCTION)  
 PARKING SPACES PROVIDED = 40 SPACES  
 RATIO = 1 PARKING SPACE PER 135 SF

**LOT 5**  
 12,000 SF BUILDING GROSS  
 10,800 SF (ASSUMED STORAGE REDUCTION)  
 PARKING SPACES PROVIDED = 72 SPACES  
 RATIO = 1 PARKING SPACE PER 150 SF

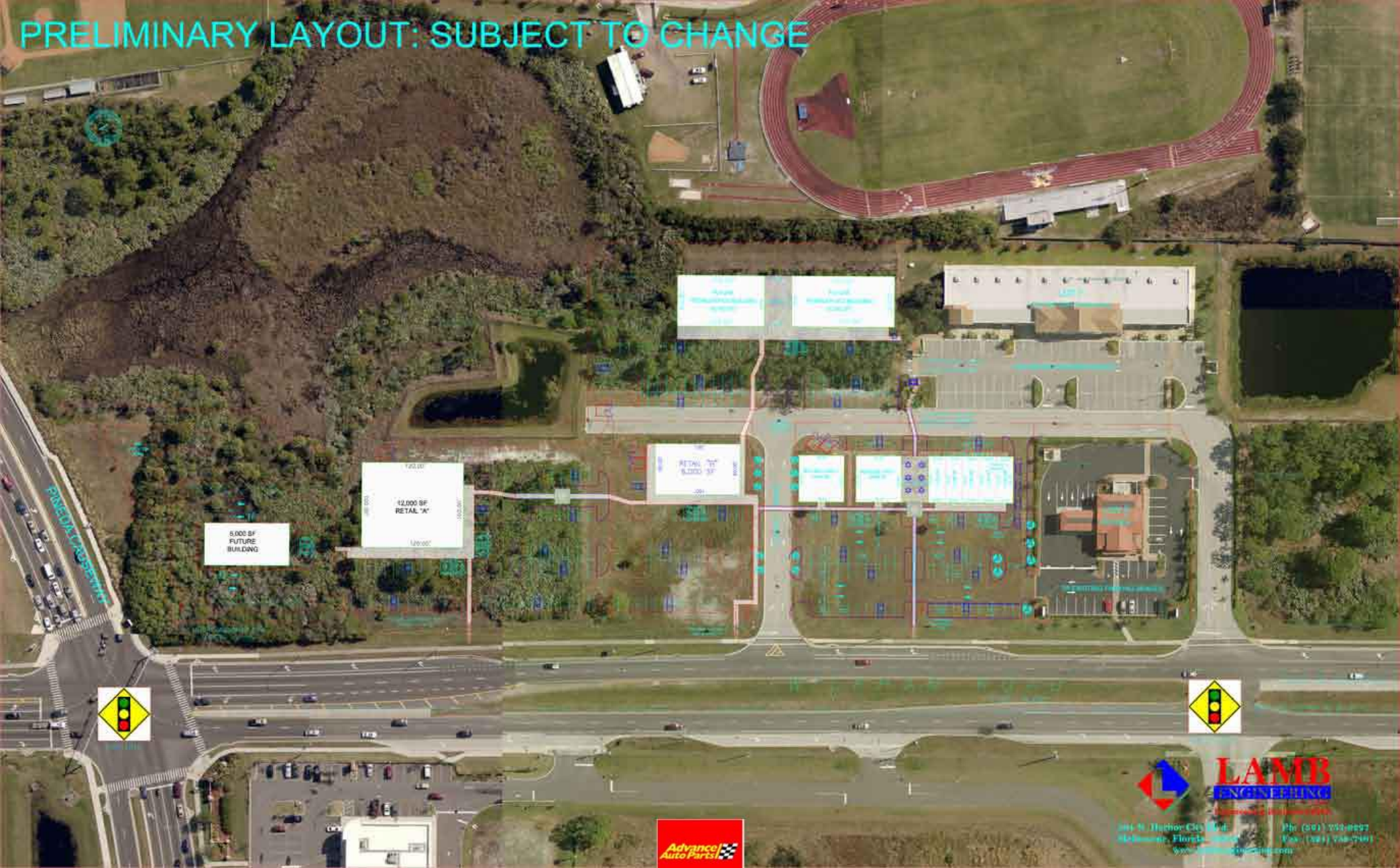
**LOT 6**  
 13,440 SF BUILDING GROSS  
 12,096 SF (ASSUMED STORAGE REDUCTION)  
 PARKING SPACES PROVIDED = 76 SPACES  
 RATIO = 1 PARKING SPACE PER 159 SF

ALL PROPOSED SPACES ARE 11' WIDE x 20' DEEP  
 (OR 18' DEEP, AS APPLICABLE) PER CITY OF  
 MELBOURNE REQUIREMENTS. EMPLOYEE ONLY  
 PARKING MAY BE 10' WIDE.





# PRELIMINARY LAYOUT: SUBJECT TO CHANGE



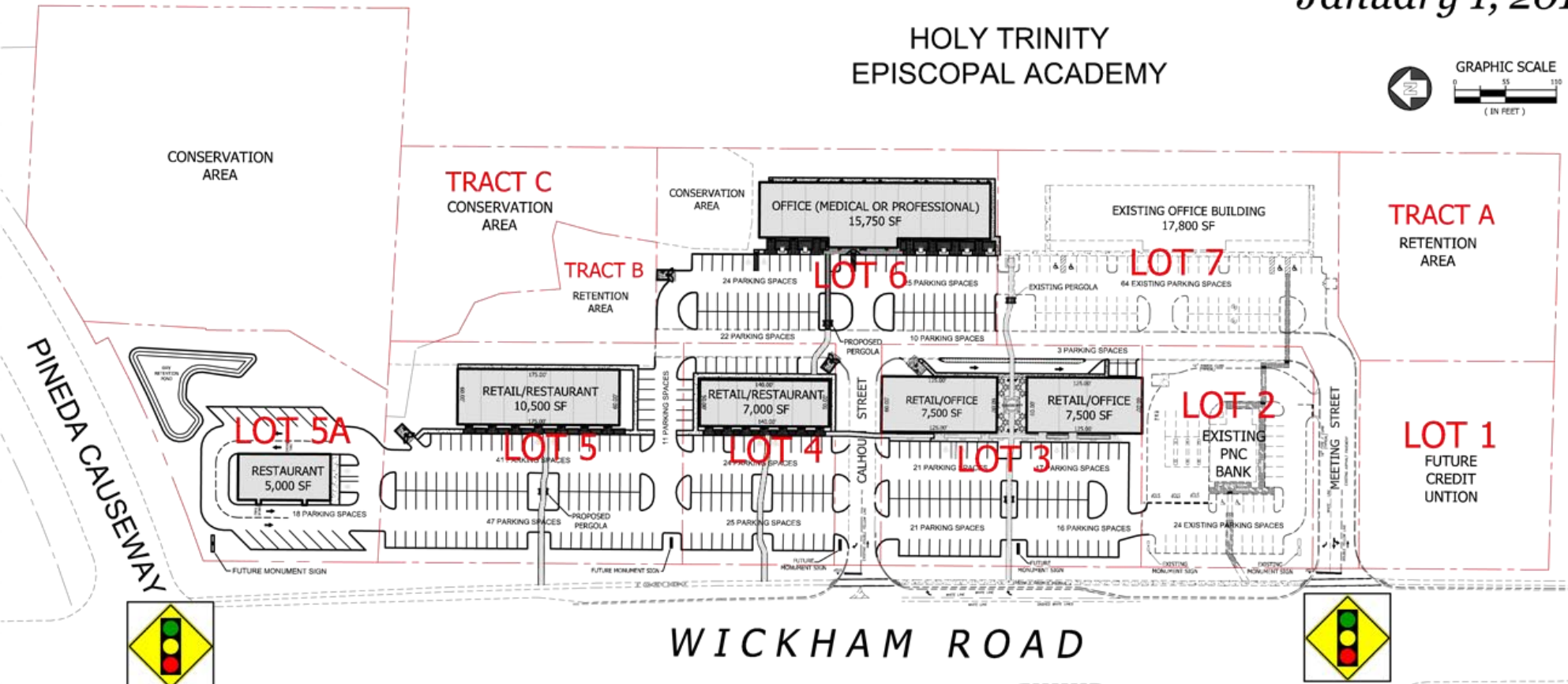
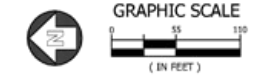
304 N. Harbor City Blvd. Phone (352) 233-8837  
McDonough, Florida 32187 Fax (352) 233-7741  
www.lamb-engineering.com



# CROSSROADS VILLAGE CONCEPTUAL SITE PLAN

January 1, 2011

## HOLY TRINITY EPISCOPAL ACADEMY



WICKHAM ROAD



TO INTERSTATE 95  
INTERCHANGE  
(1.8 MILES)



LOT KEY:	
LOT 1:	1.07 ACRES
LOT 2:	1.02 ACRES
LOT 3:	1.55 ACRES
LOT 4:	0.90 ACRES
LOT 5:	1.78 ACRES
LOT 5A:	1.35 ACRES
LOT 6:	2.06 ACRES
LOT 7:	2.07 ACRES

**LAMB ENGINEERING**  
INC.  
Engineering Business #9228

504 N. Harbor City Blvd. Ph: (321) 757-9227  
Melbourne, Florida 32955 Fax: (321) 752-7461  
www.lambengineering.com



# CROSSROADS VILLAGE CONCEPTUAL SITE PLAN

January 1, 2011



TO INTERSTATE 95 INTERCHANGE (1.8 MILES)



LOT KEY:	
LOT 1:	1.07 ACRES
LOT 2:	1.02 ACRES
LOT 3:	1.55 ACRES
LOT 4:	0.90 ACRES
LOT 5:	1.78 ACRES
LOT 5A:	1.35 ACRES
LOT 6:	2.06 ACRES
LOT 7:	2.07 ACRES



**LAMB ENGINEERING**  
INC.  
Engineering Business #9228

504 N. Harbor City Blvd. Ph: (321) 757-9227  
Melbourne, Florida 32935 Fax: (321) 752-7461  
www.lambengineering.com