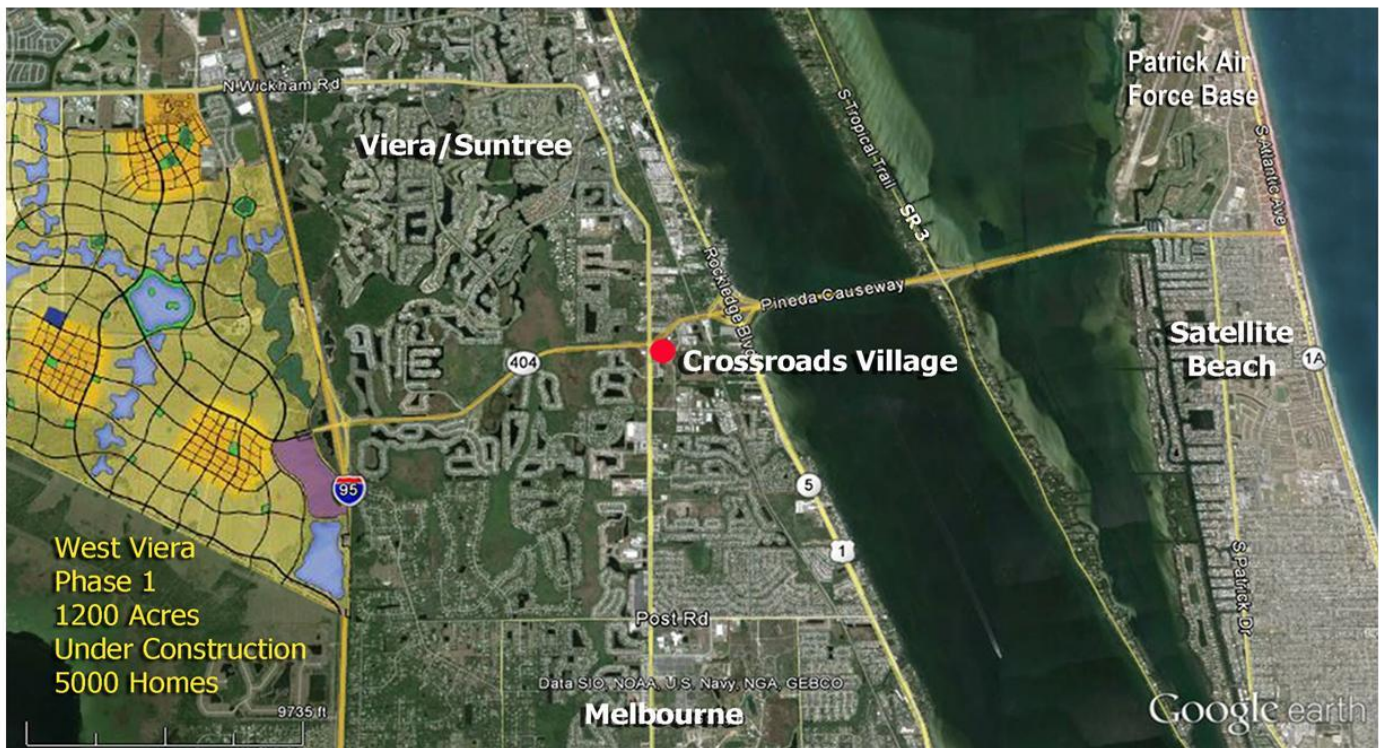


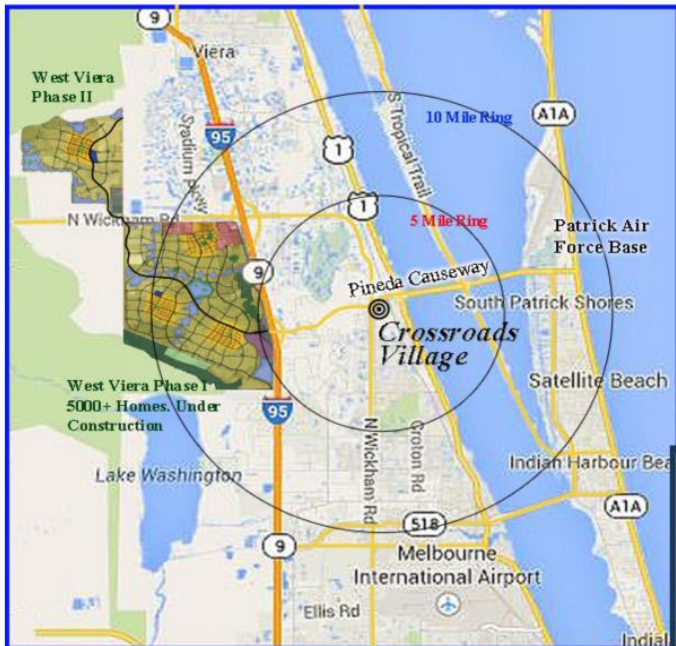
Crossroads Village for your Medical and Professional Offices
"The Center of Business in Brevard County"
 1,500-14,250 Square Feet Built to Suit You.

Join Our
 Regional and
 National Tenants



Crossroads Village is located at the SEC of N. Wickham Road and Pineda Causeway in the demographically superior Viera/Suntree area of Brevard County, Florida. Locate your business at the center of Brevard's five causeways; at the shortest distance and quickest trip between I-95 and the Beaches in all of Brevard County. A regional, high profile, meticulously maintained office location with county-wide access. Of Brevard County's 553,805 2015 population, most are less than twenty five minutes from *Crossroads Village*.





 <p>LIGHTLE BECKNER ROBISON INCORPORATED COMMERCIAL REAL ESTATE SERVICES</p>	<p>JEFF ROBISON Broker/Principal</p> <p>70 W. Hibiscus Blvd. Melbourne, FL 32901</p> <p>321 508 9462 Jeff@TeamLBR.com</p>
--	---