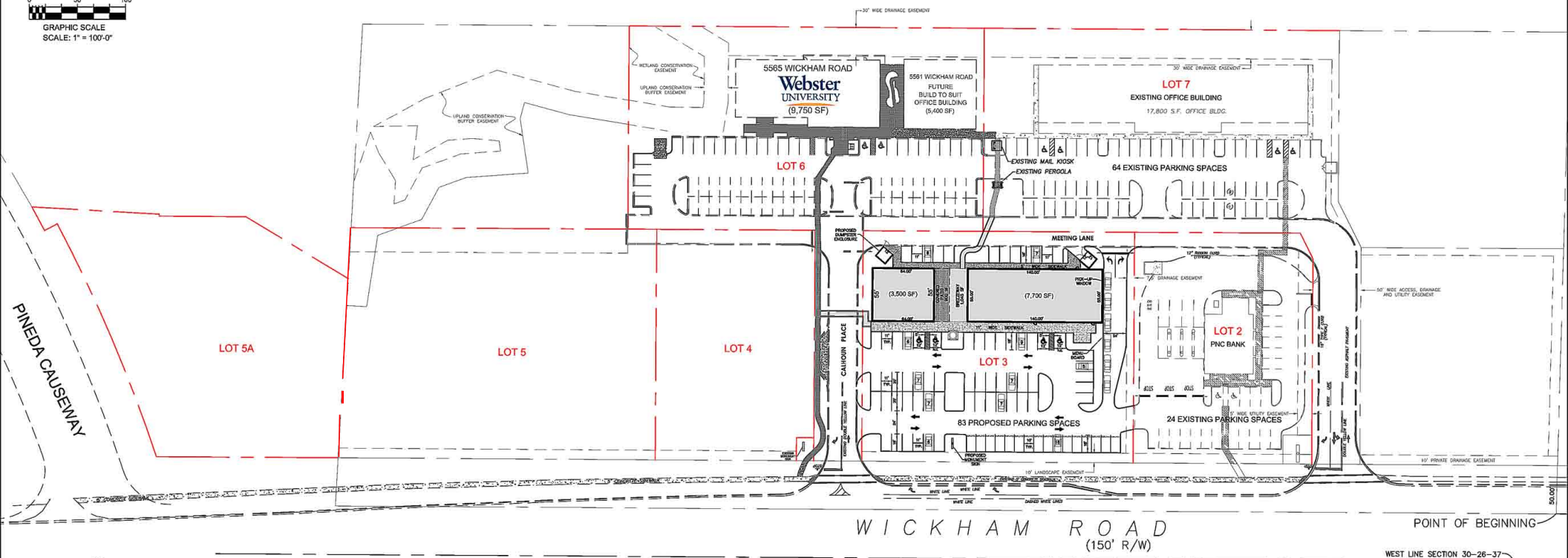
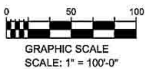


PRELIMINARY LAYOUT: SUBJECT TO CHANGE



WICKHAM ROAD
(150' R/W)

POINT OF BEGINNING
WEST LINE SECTION 30-26-37



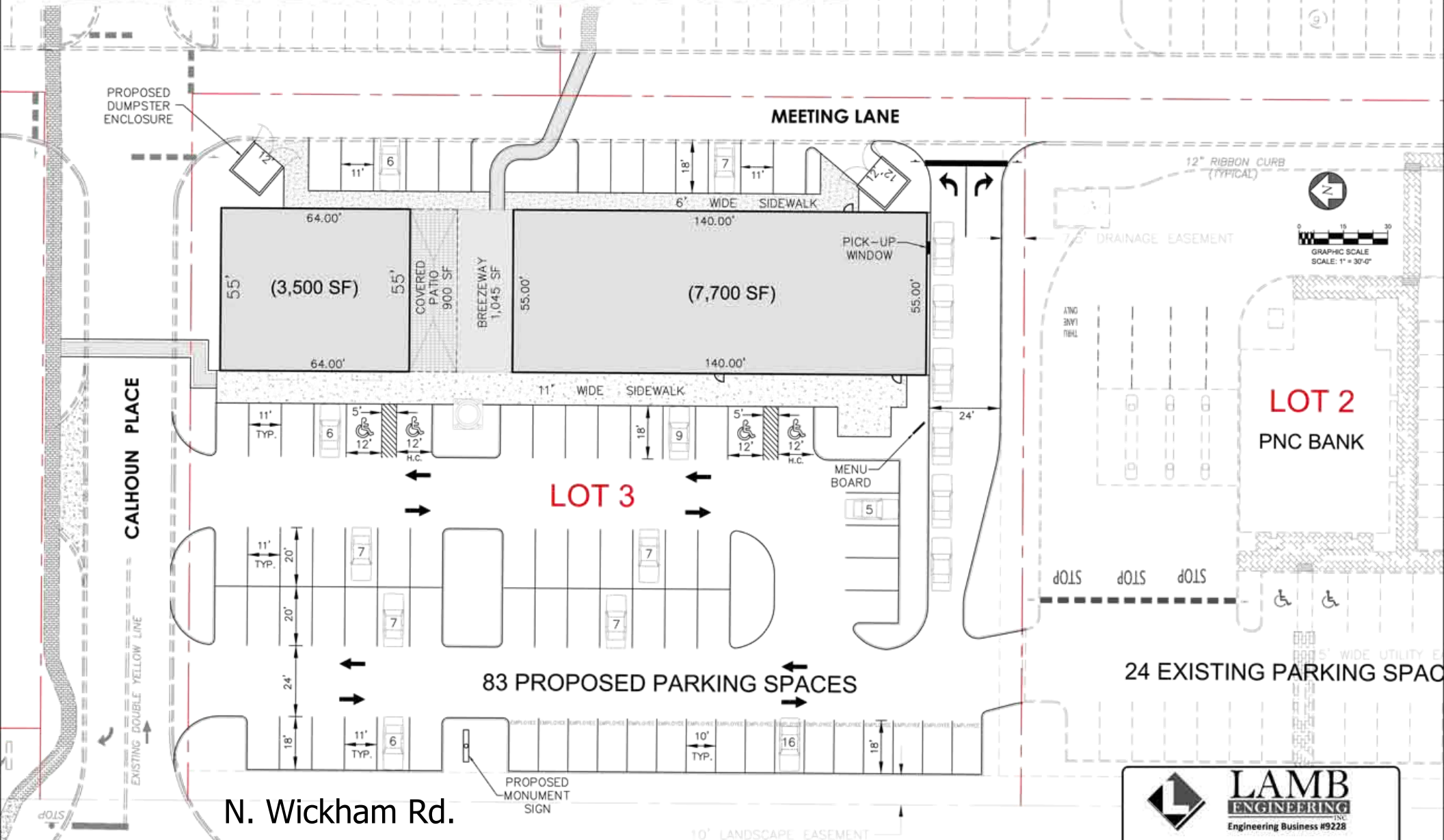


LAMB
ENGINEERING
INC.
Engineering Business #9228

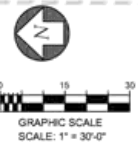
PO Box 360813
Melbourne, Florida 32936
www.lambengineering.com

Ph: (321) 757-9227
Fax: (321) 752-7461

PRELIMINARY LAYOUT: SUBJECT TO CHANGE



(9)
(9)



LOT 2
PNC BANK

LOT 3

83 PROPOSED PARKING SPACES

24 EXISTING PARKING SPACES

N. Wickham Rd.

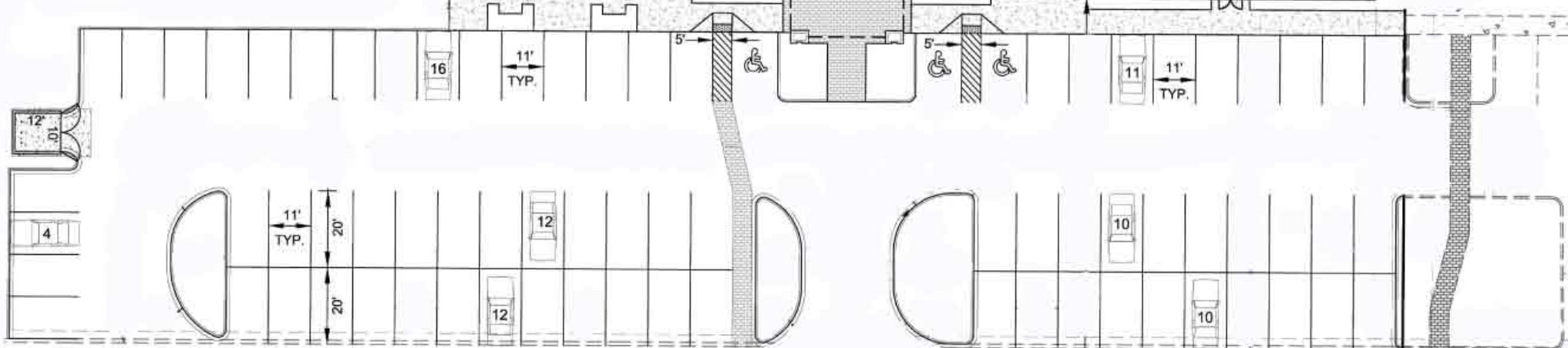
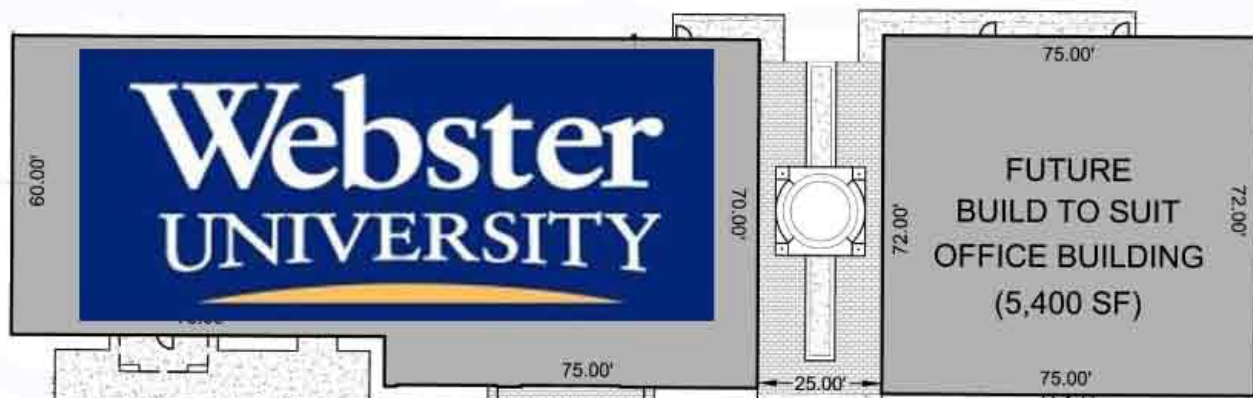
LAMB ENGINEERING INC.
Engineering Business #9228

PO Box 360813
Melbourne, Florida 32936
www.lambengineering.com

Ph: (321) 757-9227
Fax: (321) 752-7461

5565

5561



MEETING LANE

